

LIVE ARTS THEATER

Season 32 | Transformations | 2022/23

Panorama Consulting and
George Worthington & Cameron Mowat present



VIRGINIA PREMIERE

THE RIVER

by Jez Butterworth



WELCOME TO LIVE ARTS!

Check Us Out

 /LiveArts

 @livearts

 /LiveArtsTheater

Live Arts is honored to welcome you to our theater, which sits on the unceded homeland of the Monacan and Manahoac Nations. We recognize them as the original stewards of this land and offer our respect to their elders—past, present, and emerging.

WHILE YOU'RE HERE ...

Concessions are located on the 3rd floor. Enjoy snacks and drinks before or after the show.

Restrooms are on the 1st, 3rd, and 4th floors. Single stall, gender-neutral restrooms and changing table are on the 4th floor.

Please **silence your cell phone** and refrain from texting during the show. **No photography or video recording**, either!

Help protect each other (and our cast!) while gathering a large group in a small, enclosed space. **Keep your mask on** over your nose and mouth during the show, except when eating or drinking.

You can find our updated COVID guidelines at livearts.org/covid.

NEW TO OUR THEATER?

Get involved! There are hundreds of ways to make theater with us.

Take a few minutes to fill out our **Volunteer Engagement Form**. We will reach out to you with more information about current volunteer opportunities.

Learn more at livearts.org. We can't wait to get to know you!



*New Volunteers
Scan Here!*



A NOTE FROM THE ARTISTIC DIRECTOR

No spoilers!

THE RIVER is one of those shows that I can only talk around, not about. A few years back, I produced a staged reading of the script and was immediately struck by Butterworth's lyricism, as well as the haunting mystery of the story. I was also oh so surprised that monologues about fishing could be poignant and sexy and moving (to someone who has never held a fishing rod!). As a huge fan of memory plays of all kinds, I was fascinated by the blend of what may be a character's memory, what may be the genuine present, and what may be pure fantasy.

I also believe that any two audience members may well leave a performance of THE RIVER with completely different ideas about "what just happened?"

THE RIVER's mysteries will keep you musing, knowing that your own predilections color your perceptions.

Susan E. Evans

Artistic Director | Live Arts

MUDHOUSE COFFEE ROASTERS



BEAUTIFUL COFFEES
THOUGHTFULLY SOURCED
AND CAREFULLY ROASTED
FOR YOU

MUDHOUSE.COM
FACEBOOK.COM/MUDHOUSE
@MUDHOUSECOFFEE

A poster for the Oratorio Society of Virginia. It features a blurred background of an American flag and a musical score. The text is as follows:

THE
Oratorio
SOCIETY OF VIRGINIA
MICHAEL SLON MUSIC DIRECTOR

*An
American
Tapestry*

March 11, 2023
www.oratoriosociety.org

An advertisement for Angelo Jewelry. It features a close-up of a blue, rectangular gemstone pendant with a gold-colored metal setting and a gold chain. The pendant is set against a dark blue background with a reflection below it.

Angelo

ANGELOJEWELRY.COM
434-971-9256

A NOTE FROM THE DIRECTOR

An enigma is “a person or thing that is mysterious, puzzling, or difficult to understand.” I would thus label Butterworth’s THE RIVER an “enigma,” a mysterious memory play or something akin to what one might see in an episode of *The Twilight Zone*. I had what I consider the great privilege to see two of his other six plays, *Jerusalem* and *The Ferryman*, in New York several years ago. Each received London’s Olivier Award and New York’s Tony Award as “Best Play” when they opened. THE RIVER, written between those two plays, premiered in London’s Royal Court Theatre in 2012 and was subsequently presented at New York’s Circle in the Square Theatre.

In his review in *The Guardian*, Michael Billington quotes the Russian playwright and novelist Ivan Turgenev: **“Death is like a fisherman who nets a fish, watches it swimming about and snatches it out in his own good time.”** He continues, “Butterworth is writing about a man who invests all his emotions in that godlike activity. But the fascination of his play is that it leaves one unsure whether one is watching a ghost story, gothic thriller or parable.”

Yeats’ poem “The Song of Wandering Aengus,” set to music, is played at the beginning and end of the play. It tells the story of a man who “catches an enchanted fish that turns into a beautiful woman who calls out Aengus’s name and then runs away. The smitten Aengus tries, and fails, for years to find her.” That’s all I’m going to say. **Butterworth once said that he hoped an audience would “encounter” his play, rather than constantly try to figure it out.** Our cast and I have enjoyed encountering and exploring the play, coming to new revelations with each succeeding rehearsal. I hope you enjoy this exploration as you encounter it as well. I would also like to acknowledge and give great thanks to our design and technical teams for the very fine artistic and collaborative work they have done to bring the production to life.

Robert Chapel
Director | THE RIVER

TRANSFORMATIONS

The 2022/23 Live Arts Season

Panorama Consulting and
George Worthington & Cameron Mowat

present the Virginia Premiere of

THE RIVER

by Jez Butterworth

LIVE ARTS

January 20-February 11, 2023

Directed by
Robert Chapel

Fish supplied by
Anderson's Seafood & Catering

Pay-What-You-Can tickets sponsored by **Ting**

The play will last about 90 minutes.
There is no intermission.

This amateur (nonprofessional) production of THE RIVER is presented by special arrangement with Nick Hern Books.

Season Sponsors Elizabeth & Joe LeVaca

cville

WTJU91.1FM
UNIVERSITY OF VIRGINIA

ting

PJ Networks
Computer Services

The Local
Charlottesville, Virginia



**NATIONAL
ENDOWMENT
for the ARTS**
arts.gov

Live Arts is supported in part by the Virginia Commission for the Arts, which receives support from the Virginia General Assembly and the National Endowment for the Arts, a federal agency.

SETTING

The cabin on the cliffs, above the river.

CAST

Steve Tharp THE MAN

Christina Ball THE WOMAN

Caitlin Reinhard THE OTHER WOMAN

PRODUCTION TEAM

Director Robert Chapel

Production Stage Manager Linda Zuby

Assistant Stage Manager Carter Walker

Scenic Designer & Set Dresser Tom Bloom

Lighting Designer Steven Spera

Props Designer Mimi Halpern

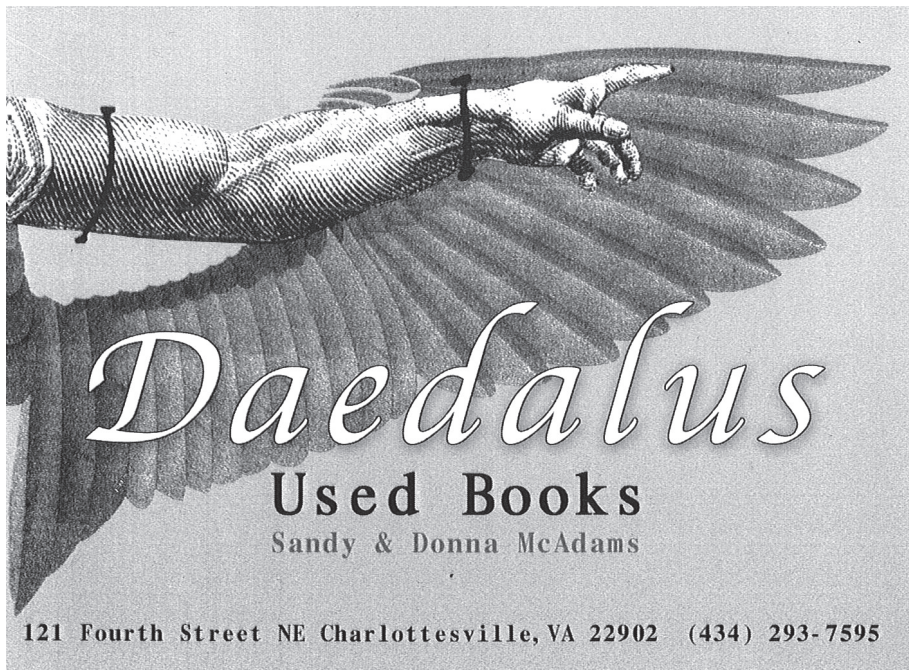
Sound Designer John Holdren

Costume Designer Tricia Emlet

Dialect Coach Tovah Close

Intimacy Consultant Laura Rikard

Soundboard Operator Jackie Lichtman

A black and white illustration of a hand holding a large, feathered wing. The hand is positioned as if grasping the wing, with the fingers slightly curled. The wing is spread out, showing detailed feather patterns. The background is a light, textured grey.

Daedalus
Used Books
Sandy & Donna McAdams
121 Fourth Street NE Charlottesville, VA 22902 (434) 293-7595

The Jeweler's Eye



Estate Jewelry
Central Place
on the
Downtown Mall

www.jewelerseye.com

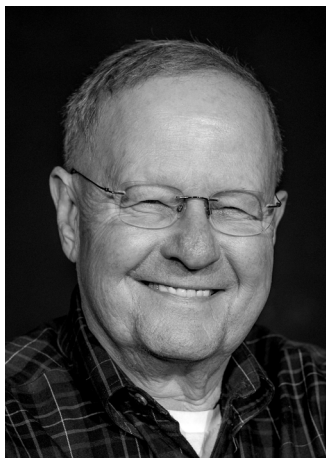
PLAYWRIGHT & DIRECTOR



JEZ BUTTERWORTH PLAYWRIGHT

Jez Butterworth is a playwright and screenwriter, actor, and film director. His stage plays include *Mojo* (1995; West End 2013); *The Night Heron* (2002) and *Winterling* (2006), both of which premiered at the Royal Court Theatre; *Parlour Song* (2008), which opened in New York; the multi-award-winning comedy, *Jerusalem* (2009; Broadway 2011), which was nominated for the Tony Award for Best

Play; *The River* (2012); and *The Ferryman* (2017; Broadway, 2019 Tony Award Winner for Best Play). Among other awards, Butterworth has received two Olivier Awards, three Evening Standard Awards, four Writers' Guild Awards, and three Critics Circle Awards.



ROBERT CHAPEL DIRECTOR

Robert Chapel has directed more than 140 productions throughout his career, including: Russian premiere of *Sweeney Todd* in Moscow; *She Stoops to Conquer* in Australia; Genet's *The Balcony* (Drama-Logue Award for Directing) in Los Angeles; *Shubert Alley* for Official Opening of Shubert Archive in New York; Bernstein's *Mass* in Ann Arbor and Charlottesville; 55 productions for Heritage Theatre

(producing artistic director); 24 productions for UVA Drama (professor and chair, 26 years); 12 productions for University of Michigan Department of Theatre; *Le Tragedie de Carmen* for Charlottesville Opera; and four productions for Live Arts. Honors include: Lifetime Achievement Award, Virginia Theatre Association; Raven Faculty Award, UVA; and Fulbright Grant and U.S. State Department Grant for trips to produce theater in Russia.

READ THE STUDY GUIDE



Scan here or go to
livearts.org

Explore the play!

Learn more about the script, playwright Jez Butterworth, and what goes into preparing real fish backstage every night before (and during) the show. The study guide for THE RIVER includes rehearsal photos and more!



JOIN US FOR A POST-SHOW AUDIENCE TALKBACK: FEB 2

Take a peek behind the curtain with Director Robert Chapel and the team behind THE RIVER, moderated by Education Director Ti Ames.

Thursday, February 2 (after the show). All are welcome!

If you would like to join us after the show, please arrive at 9pm.

WHO'S WHO IN THE CAST



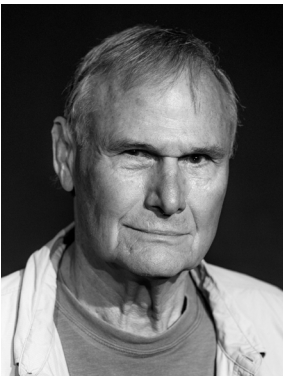
CHRISTINA BALL THE WOMAN

Christina (she/her) feels lucky to return to the Founders Theater for her second production in the Transformations Season, following LOVE AND INFORMATION. You may have seen her playing The Woman (a different one!) in DEATH OF A SALESMAN (2017) or as Greer in SEVEN HOMELESS MAMMOTHS (2018). She's so grateful for the chance to work with Bob Chapel and the rest of the A-game cast and crew on this intimate, poetic show.



CAITLIN REINHARD THE OTHER WOMAN

Caitlin (she/her) grew up in Portland, OR, and spent her high school years acting and singing in plays and musicals. This is Caitlin's first Live Arts show. She works for a national resettlement agency and provides technical assistance and training to offices across the country. Caitlin enjoys discovering new music, cooking and baking for family and friends, and exploring new heights.



STEVE THARP THE MAN

Steve has been performing locally for over 50 years including work with Live Arts, Act One, Four County Players, Off Stage Theatre, VA Players, Heritage Rep, The Oratorio Society, and The Wilson School of Dance. Recent Live Arts roles include Bishop in LES MISÉRABLES (2014), Atticus Finch in TO KILL A MOCKINGBIRD (2016), and Willy in DEATH OF A SALESMAN (2017).

PRODUCTION TEAM BIOS

TOM BLOOM | **Scenic Designer & Set Dresser**

Emeritus associate professor (UVA Drama). Live Arts designs: MRS WARREN'S PROFESSION (1998), THE IMPORTANCE OF BEING EARNEST (2001), TRAVESTIES (2001), NINE (2004), MOTHER COURAGE (2008). Numerous scenic designs for Heritage Repertory Theatre (favorites: *Sweeney Todd*; *Next to Normal*; *Red*) and UVA Drama (*Triumph of Love*; *Seven Guitars*; *Parade*).

TOVAH CLOSE | **Dialect Coach**

Tovah (she/her) is a faculty member of UVA's Department of Drama and a professional dialect and vocal coach. Coaching credits include Off-Broadway, regional theater, and academic theater (primarily at UVA and NYU). At Live Arts, she has coached CURIOUS INCIDENT (2019), RAGTIME (2018), THE WOLVES (2019), TOP GIRLS (2018), and the L.A.T.T.E production of BIG LOVE (2018).

TRICIA EMLET | **Costume Designer**

Tricia has been costuming at local theaters for almost 20 years. Her recent shows include *As You Like It, It Shoulda Been You* and *Picasso at the Lapin Agile* at Four County Players, and *Midsummer* at the Edinburgh Fringe. Before COVID she costumed FOLLIES at Live Arts (2019). Love to John; thanks to Bob.

MIMI HALPERN | **Props Associate**

Mimi is overjoyed to work with this amazing cast and crew. It all went swimmingly, until the fish had to give up the gills.

JOHN HOLDREN | **Sound Designer**

John's Live Arts sound designs include THE CHILDREN (2022), CURIOUS INCIDENT (2019), TIGERS BE STILL (2019), GRUESOME PLAYGROUND INJURIES (2015), and more. He enjoys acting and directing, especially Shakespeare—he played Bottom in *Midsummer* (2019) and recently directed *As You Like It* (Shakespeare at the Ruins, 2022).

LAURA RIKARD | **Intimacy Consultant**

Laura (she/her) is co-founder and head faculty of Theatre Intimacy Education. Laura choreographs, consults, and teaches workshops on best practices for staging intimacy for professional and educational theater and film across the country. She also serves as an intimacy coordinator for film/TV. She received the Kennedy Center Medallion for her contributions to intimacy direction. She is a graduate of UVA's MFA acting program and a mom of four-year-old twins. Insta: @Irikardlc

STEVEN P. SPERA | **Lighting Designer**

Steven is a lighting designer of theater, dance, and opera. He has a love of coffee, running, and golf.

CARTER WALKER | **Assistant Stage Manager**

Carter grew up doing community theater in the Shenandoah Valley. She recently worked with Live Arts for the first time on VIOLET. Recent stage credits include Cassie Cooper in *Rumors* (Waynesboro Players, 2018) and Nurse Kelly in *Harvey* (Oak Grove Theater, 2022). She has also performed in THE RIVER.

LINDA C. ZUBY | **Production Stage Manager**

Linda is pleased to be working with Bob Chapel and this lovely cast. She doesn't stage manage often but when she does, it should be a really awesome play. You may have seen her on stage in *Young Frankenstein: The Musical*, *THE DROWSY CHAPERONE*, *Cabaret*, *WIT*, *Blithe Spirit*, *THE BEARD OF AVON*, and *Endgame* to name a few. Education: Wright State University with a BFA in theatre/acting.



ting




Connect better

Ting Internet. Fast, reliable fiber internet for Cville.



Home Fiber 1000 Gigabit Internet

\$89/mo

-  Up to 1,000 Mbps symmetrical speeds
-  Connect 20+ devices seamlessly
-  Unlimited data

Live Arts Supporters: Order Home Fiber 1000 using promo code **LIVEARTS2022** and receive free standard installation, your second month of service FREE, a \$50 donation to Live Arts and a \$25 Downtown Mall gift card!

Learn more at tinginternet.com/cville

THE RIVER | GLOSSARY OF TERMS

Baccy: *Tobacco*

Gink: *Paste that keeps flies from getting wet*

Priest: *Mallet*

Headland: *A narrow piece of land that projects from a coastline into the sea*

Obsidian: *Smooth, black, uniform volcanic glass*

In Spate: *When a river is flooding*

Plaster: *Band-Aid*

St. Crispin's: *A school in Workingham in Berkshire, England, 39 miles south of London*

Grilse: *A salmon or trout that has returned to fresh water after a single winter at sea*

Prat: *Idiot*

Spliff: *A marijuana cigarette*

Orange Darter: *Fly used in fishing*

Monster Munch: *A British baked corn snack*

Bunged: *Thrown carelessly*

Yew Tree: *Used to make medicine for diphtheria, tapeworms, and other diseases*

Black Bomber: *Fly used in fishing*

Tippet: *A specific gauge monofilament line that is attached to the end of the leader, to which one ties the fly*

Dropper: *A short section of a tippet, tied to a leader to allow one to fish with several flies on the same leader*

Sedgefield Yellow, Black Gnat, and Mallowflier: *Kinds of droppers*

Single Lapwedge Sedge: *A tiny fly (insect)*

Thrumbing: *Continuous rhythmic movements*

Bracken: *Tall ferns*

Berea and Thessalonica: *Cities in Central Macedonia in Northern Greece*

Atareus: *A Greek astrological diety*

The River Astraeus: *A famous river in Greece known for trout*

WHO MAKES THIS WORK

SETS & LIGHTS

Hill Barnett
Will Barnett
Tom Bloom
Austin Bouchard

Dan Feigert
Etta Feigert
Lita Flowers
Elissa Kaufman
Will Kelly
Skyler Kuyk

Savannah Meriwether
Lindsay Meck
Steven Spera
Emily Torman
Tony Walker
Kris Williams

FRONT OF HOUSE

Hope Bagley
Erin Bulinski
Max Bulinski
Deborah Caudle
Elaine Chapman
Roberta Cook
Alex Davis
Brian Dowd
Malcolm Dyson
Nick Evans
Joan Forrest
Margaret Gardiner
Eric Gilchrist
Amy Goffman
Dave Goldstein
Ruth Mary Hall

Brian Hamshar
Edwina Herring
Sue Horne
Jim Horstkotte
Ginny Hoverman
Michele Howe
Demitri Kalogeropoulos
Jane McDonald
Mark McLane
Margaret Migas
Patrick Migas
David Minton
Kathi Minton
Susan Munson
Sandra Pai
Sarah Peaslee
John Rabasa
Tom Raney

Julia Robertson
Dawn Schimke
Cheryl Schwandt
Tracy Schwandt-Hardley
Ethan Serr
Laura Shea
Stephen Smith
Aimee Steussy
Cherry Stewart
Michael Swanberg
Artie Tekel
Susan Tiezzi
Roger Tolle
Jamie Virostko
Tony Walker
Zelda Walker
Tim White

CONCESSIONS PARTNERS

Albemarle Baking Company
Champion Brewing Company

Early Mountain Vineyards
Mudhouse Coffee Roasters

STAFF

Ti Ames

Education Director

Tia Daniels

Housekeeper

Jeremy Duncan Pape

Technical Director

Susan E. Evans

Artistic Director

Nick Hagy

Production Manager

Ronda Hewitt

Development Manager

Anne Hunter

Executive Director

Chris Kelly

Administrative Assistant

Kathleel Mueller

Volunteer Coordinator

Ray Nedzel

Fringe Director

Adrienne Oliver

New Works Director

Katie Rogers

Marketing Manager

Darryl Smith

Audience Experience Manager

Annie Temmink

Associate Technical Director

Linda Zuby

Bookkeeper

PLAYBILL

Design by Katie Rogers

Production Photos by Will Kerner

Butterworth Photo by Suki Dhanda

BOARD OF DIRECTORS

Ernest Chambers

President

Johannah Castleman

Vice President

Barbara Kessler

Secretary

Shannon Montague

Treasurer, Finance Chair

Fredrick Martin

DEI Chair

Matt Yohe

Governance Chair

Scott Williams

Development Chair

Shilpa Davé

Kelly Dowd

Aimee Fagan

Jaronda Miller-Bryant

Jacquelyn Nasca

Kalib S. Nelson

Bonita Patton

Lizzy Ramey

Molly Shadel

Larissa Sneathern

Ashleé Thompson-Bellamy

Derick Williams

Counsel:

James F. Neale, McGuireWoods LLP

CCA Representatives:

Karen Pape

Barbara Kessler

WE'RE HIRING

2023 Live Arts Summer Staff



We are looking for enthusiastic, energetic individuals to join our team of **camp counselors** and **administrative interns** who make Live Arts theater camps possible! All positions include a weekly stipend.

Find more information and interest forms at livearts.org/work-here

2023 TEEN SUMMER MUSICAL ANNOUNCED!

**HEATHERS THE MUSICAL:
Teen Edition**

Book, Music, & Lyrics by
Kevin Murphy & Laurence O'Keefe

Based on the Film by
Daniel Waters

Directed by **Daniel Kunkel**
Musical Direction by **Abby Smith**

Audition info TBA at livearts.org





▶ Celebrate the best of Virginia wine & food

Award-winning wines & tasting room.

Seasonal menus from the bounty of local Virginia farms.

Details at earlymountain.com.

Come visit us in the foothills of the Blue Ridge Mountains.



EARLY
MOUNTAIN

6109 Wolfstown Hood Rd. Madison, VA 22727

FRIENDS, DONORS, & SUPPORTERS

We are so grateful for the following individuals and organizations who have generously supported the 2022/23 Transformations Season. This donor list recognizes philanthropic gifts received between **July 1 and December 31, 2022.**

If there is an error or you would like your name to appear in a different format, please contact Development Manager Ronda Hewitt at ronda@livearts.org.

GIFTS FROM INDIVIDUALS

Cyndy Alaimo	Hillary J Bracken	Mariko Doktor
Josh & Cherish Alberts	Olivia E. Branch	Honnor Dorsey
Elizabeth Alcorn	Cathie Brettschneider	Andrew & Marybeth Dowdell
Courtney Ashmore	Alyssa Brookland & Steven Caliarì	Will Dozier
Cathryn Astin & Patricia Rose	Dickson & Dee Brown	Kevin Driscoll
Patricia Asuncion	Jessie Bruner	Lewis Dunn
Rachel Baker & James Burnett	Brenda & Rich Busofsky	Bette Dzamba & David Sellers
Lori Balaban	Mary & Randy Caldejon	William Ellis
Louisa Barrett	Chris Cannady	Ellen Evans
Robert Baumgartner	Gwendolyn Cassady	Aimee & Daniel Fagan
Judy & Ferdi Bazin	Samuel & Cyndy Caughron	Melissa Figueroa & Eric Neff
Charles Beard	Ernest & Christine Chambers	Christine Fleckles & Edwin Rushia
Kim & John Beard	Janis & Robert Chevalier	Robert & Joan Forrest
Ari Bell	Marisa & Neil Christensen	Diana Foster-Jones
Heidi Gilman Bennett	Judy & Ralph Cohen	Rob & Kathy Freer
Sari Bennett & Samuel Schustek	Mary Collier	Pam Friedman & Ron Bailey
Tucker Berardi	Robert Cook	Martha S. Fruehauf
Earle & Nicole Betts	Kathy & Richard Cornelius	Elizabeth Fuller
Paul Beyer	Adam Courville	Larry Bouchard & Margaret Galloway
Karl Pfefferkorn & Katharine Birdsall	Virginia Daugherty	Nancy & Jim Galloway
Kristina Reid Black	Shilpa Davé	Cheryl Gaughen
Ralph & Rose Bledsoe	Eduard & Francesca De Lange	Barbara Gehrung
Molly Bloom & Joel Streeter	Donna & Richard DeLoria	Chip Gerstenmaier
Thomas & Betsy Bloom	Brandi Dennis	John Gibson & John Bluhm
Elizabeth Bowman & Randy Pendleton	Eunie Kelly & James Deter	David & Janna Gies
	Terri Di Cintio & Chip King	Molly Giesbrecht
	Dudley Doane	

Grace Giras	Daniel Ingersoll	Jackie Lichtman & Russell Linden
Kristen Gleason	Deborah Jackson	John Lockney
David & Deborah Godden	Susan Jacobson & Norman Oliver	Mary Carter Lominack & Kristine Hall
Amy Goffman & Jim Horstkotte	Natacha Jacques	Barbara MacCallum & Robert Johnson
Larry Goldstein	Judd Jarvis	Zanne Macdonald
Linda Gonder-Frederick & Jeff Frederick	Lisa Draine & Joel Schectman	Mary Maher & Gabe Ofiesh
Stephanie Goodwin	Mary-Agnes Johnson	Bruce Mahone
Nanci & Jeff Gould	John & Joan Kammire	Joan Manes
William Gray	Catherine F. Kane	April Manning
Thomas & Barbara Grzymala	Heather Karp & Ira Herbst	Carol Manning & Eric Turkheimer
Danait Haddish	Barbara & Jay Kessler	Fredrick Martin
Erin Fletcher Hall	Janis Ketchmark	Abigail Maynard
Mary Carter Lominack & Kristine Hall	Michael King	Beverley McCaskill
Sharon & James Harrigan	Donald & Mary Kirwan	Jane McDonald
Kyndal Harrison	Tom & Ruth Klippstein	Michael McKee
Will & Mittie Harvey	Karen & Scott Knierim	John McLaren
Susan Haubenstock	William S. Knight	Glenn McLaughlin
Roger Hautsch	Phyllis Koch-Sheras	Karyl-Leigh Megaw
Maribeth Haynes	Ron Krauss	Jon & Mary Mikalson
Elain Heffelfinger & Doug Murphy	David W. & McCrea S. Kudravetz	David & Kathi Minton
Jim Heilman	Beth & Nicholas Kuhn	Kate & Joe Monaghan
Ronda Hewitt	Mindy Labernz	Jami Montambault & Hoke Perkins
Heather Hill	Harold & Marcia Langsam	Julie & Geoff Montross
Kinne Hoffman & Christopher Milner	Daphne Latham	Kerry Moran & Mark Rylander
Brian Hogg	Cathy Lawder	Mindy Moran
Nancy Hopkins & Bruce McKenney	Elizabeth Lee & Thomas Fitzgerald	Randolph Moulton
Sharon Lee Hostler	Joan Lee	Margaret Mucklo
Jonathan Howard	Meredith Lee	Noelle Muha
Elizabeth Howard	Bill LeSueur	Matthew B. & Mary P.Y. Murray
Anne Hunter & Scott Taylor	Elizabeth & Joe LeVaca	Jacquelyn Nasca
Cynthia Hurst	Bill & Peyton Lewis	Willa & Jim Neale
	Linjie Li	



Navigating a dispute?

The Mediation Center of Charlottesville has been serving Central Virginia for over 30 years. Our certified mediators facilitate divorce agreements, landlord-tenant issues, workplace conflicts, custody/visitation disputes, neighborhood disagreements, eldercare decisions, and more.

Contact us. We can help.



www.mediationville.org ♦ 434-977-2926

Live Arts thanks



professional audio visual solutions

for their generous support

The AV Company

**The premiere audio-visual
company headquartered in
Charlottesville, Virginia**

theavcompany.com

FRIENDS, DONORS, & SUPPORTERS (CONTINUED)

Kalib S. Nelson	Eve & Mark Schwartz	Bill & Elly Tucker
Louis & Kristine Nelson	Aileen & Gary Selmeczi	Patricia Vastano
Alex & Jessica Newmark	John-Michael Seng-Wheeler	Ken Victor
Lia Norton	Molly & Matthew Shadel	Sean Walsh
Dennis O'Connor	Kurt Meusel & Kelli Shermeyer	Bitsy & David Waters
Mark & Carolyn O'Hara	Amanda Shuker	Annie Way & Warren Craghead
Debbie Owen	Laurie Shulman	Lewis Weber
Marla Palermo	Naomi Slagowski	Carol Wise & Nancy Weiss
Karen Pape	Kay Slaughter	Ann Welch
Peggy & Bob Paviour	Craig L. Slingluff, Jr.	Marian & Jerry Wendelin
Chris Peterson & Jeff Horneff	Larissa Sneathern	Christopher & Sara Whiffen
Elizabeth Powell	Kevin Snyder	Bonita White
Lisa Provence	Gail South	Lynda White
Sean Clinchy & Estelle Rainsford	Daniel Sprague	Charles W. Swinney & Steuart White
Lizzy Ramey	Maria Stein	Barbara Williams
Gail Raymaker & Gerald Shea	Cathy & Jeep Newman	Scott Williams & Susan Braun
Martha & Craig Redinger	John Stoner	Tammy Wilt
Gabriella Reedy	Erika Struble	Charles M. Winkler
Joshua Reifel	Miller & Lee Susen	Russell Witt
Alice Riccabona	Christine Sweeters	Keith & Adrienne Woodard
Kristin Rigg	Patsy & Richard Swindler	Michelle Prysby & John Woodell
Vivian Robinson	Suzanne Tanner Chitwood	George Worthington & Cameron Mowat
Katie Rogers	Jacqueline Langholtz & William Randolph Taylor	Ashley Wright
Kyle Rogers & Mariana Vervena	Ellen Teplitzky	Debbie Wyatt
Pam Roland Lengel	Steve & Nell Tharp	Matthew C. Yohe & Erica A. Barnes
Marion W. & Walter B. Ross	Heidi & Terry Thorsen	David & Linda Zuby
Jane Saltzman	Anne Tilney Brune	
Geri & Bruce Schirmer	Emily Torman	
Stephanie Schlecht	Andrew & Alison Towns	
Karen Schmidt	Cindy Ann Trentacosta	
	Betsy & Chip Tucker	

GIFTS FROM ORGANIZATIONS

Albemarle County

Allison Partners

Bama Works Fund of Dave Mathews Band

Bank of America Charitable Foundation

Bushman Dreyfus Architects

C&O Restaurant

The Caplin Foundation

Catalysis Fund

Charlottesville Area Community Foundation

Chaski Global

City of Charlottesville

C-VILLE Weekly

The Joseph and Robert Cornell Memorial Foundation

Daedalus Used Books

The DN Batten Foundation

Dominion Energy Charitable Foundation

Heiner Family Fund

Latitude 38

The Local

The Madwoman Project

The Oratorio Society of Virginia

Panorama Consulting

PJ Networks

Quantitative Investment Management Fund

Silverchair

Strauss Construction

T & N Printing

Target Circle

Ting

The Vault

Virginia Commission for the Arts

Virginia National Bank

Woodard Properties

WTJU 91.1FM



FRIENDS, DONORS, & SUPPORTERS (CONTINUED)

GIFTS IN HONOR OF

Helen C. Chambers

Ernest & Christina Chambers

Jean Edwards

James Childress

Our parents Jo, Ed, Russ, Muff

Pat & Madison Cummings

Etta Feigert

Frank & Fran Feigert

Hillel Finder

Gabriel Finder & Fern Hauck

The Founders

Bobbie Buxton

Jim Heilman

Patricia Smith & Ray Mishler

Anne Hunter

Dawne Brown White

Anne Hunter and the dedicated Live Arts staff

Scott Williams & Susan Braun

Men on Boats Cast

Anne Olsson Loebis

Nabb Sisters

Andrew & Marybeth Dowdell

Colette & Michael Russo

Lorraine Rein

Darryl Nelson Smith

Anonymous

Jocelyn Johnson
& Billy Hunt

Sydna & Bill Julian

Marta Keane

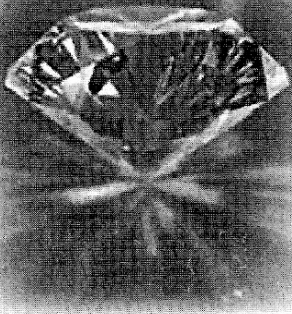
Peppy Linden

Fran Smith

Timothy Read

Lotta Lofgren

The more things change...
the more they stay the same



Offering the finest in
Diamond and Wedding Rings - College and Class Rings
Wedding Gifts - Engraving - Pearl Restringing
Pewter items - Accutron, Bulova & Carvelle Watches
Expert Watch and jewelry Repair
And much more.

Tuel Jewelers

On The Downtown Mall, 319 East Main St., Charlottesville
"Your Friendly Jewelry Store since 1945" 434-295-4258

GIFTS ON BEHALF OF

Barbara & Jay Kessler

David & Sue McConaughy

Katie Rogers

Grason Wolfe

GIFTS IN MEMORY OF

John Conover

Hank & Jaye Barre

Will Kerner

Jon Eddows

Donna
& Sandy McAdams

Floyd Hurt

Donna
& Sandy McAdams

James C. Miller

Christine Sweeters

Evelyn Nasca

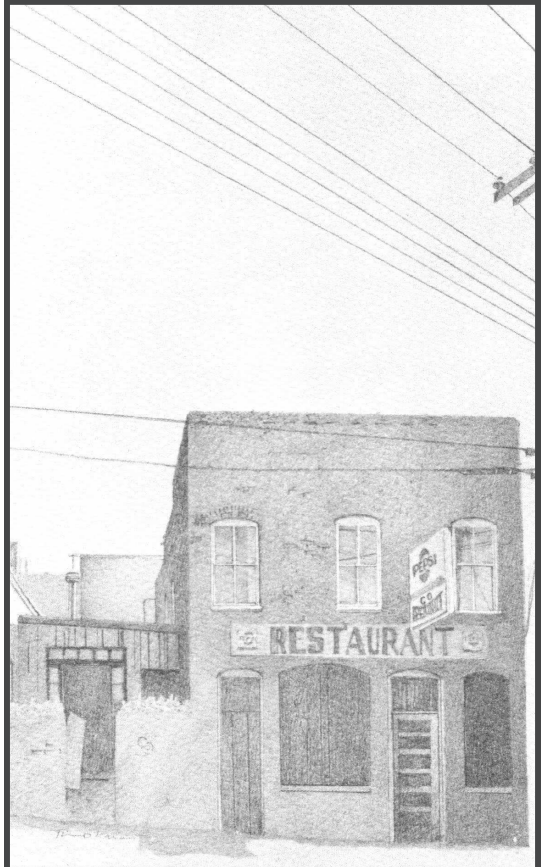
Jacquelyn Nasca

Howard Pape

Jeremiah
& Morgan Brophy

**Looking to honor a
loved one with a
contribution to Live Arts?**

Contact Ronda Hewitt
at ronda@livearts.org or
434-977-4177 x101.



à votre santé

LA CUISINE

• SINCE 1976 •

C and O
RESTAURANT

434.971.7044

515 E. Water Street Charlottesville, VA



JUMP INTO WATERWORKS!

OUR UPCOMING NEW WORKS FESTIVAL THAT ALREADY HAS 500+ SUBMISSIONS

YOU'RE INVITED TO A "POOL" PARTY

MARCH 5

SUNDAY

1-5PM

SAVE THE DATE



LEARN MORE ABOUT WATERWORKS AND **JOIN OUR POOL OF VOLUNTEERS & STAFF**

WE NEED:

- | | |
|----------------|--------------|
| PARTY PLANNERS | SINGERS |
| CLEAN-UP CREWS | DANCERS |
| ACTORS | ARTISTS |
| DESIGNERS | CREATIVES |
| USHERS | GREETERS |
| BARTENDERS | SUPPORTERS |
| BOARD OPS | ...AND MORE! |

WATERWORKS IS MAY 12-JUNE 3, 2023

CHECK IT OUT AT LIVEARTS.ORG/WATERWORKS-FESTIVAL

300 E Main Street • vaultvirginia.com

THE GUILD

AT VAULT VIRGINIA

Office Space to Vault Your Work



The Guild is a community membership designed to bring us together around ideas, culture, and enriching experiences. Find flexible membership opportunities at vaultvirginia.com/the-guild.

And make sure to tell them Live Arts sent you!

OUR CLIENTS LOVE US!

"PJ Networks stands out among managed technology firms for their depth of knowledge, responsiveness, and systems thinking. They make our whole team more efficient and less frustrated!"



PJ Networks
Computer Services

pj-networks.com | 434-975-0122

JOIN US IN THE SCENE SHOP!



LIVE ARTS
SCENIC GUILD

Help us build a show from the ground up. Volunteering in the scene shop is a fun and meaningful way to work with your hands, problem-solve as a team, develop carpentry and painting skills, make friends, use power tools, and so much more.

Upcoming set builds for **CRUMBS FROM THE TABLE OF JOY**:

Saturday, Jan 28 (10am-4pm)

Tuesday, Jan 31 (6-10pm)

Saturday, Feb 4 (10am-4pm)

Tuesday, Feb 7 (6-10pm)

Saturday, Feb 11 (10am-4pm)

Tuesday, Feb 14 (6-10pm)

Saturday, Feb 18 (10am-4pm)

Tuesday, Feb 21 (6-10pm)

Saturday, Feb 25 (10am-4pm)

Tuesday, Feb 28 (6-10pm)

All are welcome! Remember to wear closed-toe shoes and work clothes. A meal will be provided. You can join us for partial or full set builds. **Questions? Email volunteer@livearts.org.**



Find current volunteer opportunities and ways to get involved at

livearts.org/volunteer

Panorama Consulting proudly supports Live Arts

Forging Theater and Community!



**Providing innovative solutions and
guidance for nonprofit organizations
in Charlottesville and the greater
Central Virginia region.**

PRINCIPAL CONSULTANTS

Scott A. Williams, Founder & Managing Partner

Susan Braun, Managing Partner

Larry Goldstein, Senior Consultant

panoramaconsultingservice.com

2023

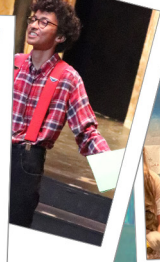
SUMMER CAMPS



Enrolling Now!



livearts.org



Ages 4-17



UP NEXT AT LIVE ARTS

Lynn Nottage's

CRUMBS

from the table of

JOY

Directed by Ti Ames

MARCH 3-19