

# LIVE ARTS THEATER

Season 32 | *Transformations* | 2022/23

The Caplin Foundation presents

# CRUMBS from the TABLE OF JOY

by Lynn Nottage

Directed by  
**Ti Ames**

Sponsored by  
**Allison Partners**



THE CAPLIN  
FOUNDATION

Allison *partners*

# WELCOME TO LIVE ARTS!

Check Us Out

 /LiveArts

 @livearts

 /LiveArtsTheater

Live Arts is honored to welcome you to our theater, which sits on the unceded homeland of the Monacan and Manahoac Nations. We recognize them as the original stewards of this land and offer our respect to their elders—past, present, and emerging.

## WHILE YOU'RE HERE ...

**Concessions** are located on the 3rd floor. Enjoy snacks and drinks during intermission and after the show.

**Restrooms** are on the 1st, 3rd, and 4th floors. Single stall, gender-neutral restrooms and changing table are on the 4th floor.

Please **silence your cell phone** and refrain from texting during the show. **No photography or video recording**, either!

Help protect each other (and our cast!) while gathering a large group in a small, enclosed space. **Keep your mask on** over your nose and mouth during the show, except when eating or drinking.

You can find our updated COVID guidelines at [livearts.org/covid](https://livearts.org/covid).

## NEW TO OUR THEATER?

**Get involved!** There are hundreds of ways to make theater with us.

Take a few minutes to fill out our **Volunteer Engagement Form**. We will reach out to you with more information about current volunteer opportunities.

Learn more at [livearts.org](https://livearts.org). We can't wait to get to know you!



*New Volunteers  
Scan Here!*



# A NOTE FROM THE ARTISTIC DIRECTOR

**I am a sucker for a good memory play.**

CRUMBS FROM THE TABLE OF JOY is so much more than that, of course, but it does use "the backward glance" to frame cross-sections of the central character's life. Maybe it's because I'd love to see myself narrating the scenes of my life in a monologue, speaking in prose as lyrically beautiful as Ernestine's words crafted by Lynn Nottage, connecting the dots, examining the events and people encountered, and assembling the jigsaw puzzle of familial personalities, finally making sense of things and answering the "why's" lined up through the years.

Nottage has been quoted as saying that in this play she wanted to capture some of the sense of immense change that was happening in 1950s America. She touches upon so many themes – family and faith, communism, racial and social injustice. We see this time and space through the eyes of Ernestine, starting with the Crump family's migration North to their new basement home in Brooklyn. Her memories whisk us along on a journey of self-discovery as we witness the joys, the struggles, and the love.

Thank you to Ti Ames and this talented, committed cast and creative team for shaping and sharing Ernestine Crump's story with our Live Arts audiences.

**Susan E. Evans**

Artistic Director | Live Arts

# It's good to be *home*.



Celebrate the 25th anniversary of Live Arts' Education Program

Welcome back Adelind Horan  
(*"The Peripheral"* on Amazon Prime)

Join Adelind Horan, alumni of LATTE, and surprise guests!

RESERVATIONS \$100 per person  
Box Office: 434.977.4177 x123  
Online: [livearts.org/tix](https://livearts.org/tix)

SPONSORED BY  
Barbara and Jay Kessler;  
Lotta Lofgren; Mary  
Maher and Gabe Ofiesh;  
and Karen Pape



**A LIVE ARTS HOMECOMING BENEFIT!**  
**SATURDAY, MARCH 25**



**2023 Apprentice Team:**  
**Will, Caroline, Maddie, Elliot, and Kiera**

Learn more about Mentor/Apprentice at [livearts.org](https://livearts.org)

# A NOTE FROM THE DIRECTOR

**Welcome to the cinema, where Black life is the main feature! “Oh, yes!”**

It’s ironic, really—how Ernestine tells the story of her family as they perform both her memories and their Blackness for a majority white audience. I have loved Ernestine’s story since I first read it 12 years ago. I immediately resonated with her romantic view of the world. As a fat, Black girl (at the time) who also loved movies and theater, I saw her and she saw me; we just happened to be telling our stories 60 years apart. Her idyllic musings gave voice to my world, too. I used her final monologue as a college audition piece and even played her in 2015 at Oberlin College. Falling in love with her, her family, and how she chooses to remember them was inevitable.

As time passed, I learned a hard lesson about Ernestine: waxing poetic and romanticizing the world around you are two very, very different things. It took me stepping outside of my Western lens to realize just how performative my life had become. I started acting to escape; I carried the theater home with me, performing happiness at whatever mental and emotional cost. I became an expert at pretending that I was okay, not realizing how destructive it actually was. Loving Ernestine and her story also meant learning to honor the untold stories around Black life that aren’t “televised,” what can’t be performed. While these characters help tell Ernestine’s story in a Black, ritualistic sense in this wonderful theater, brought to life with gorgeous technical elements, these actors will not be performing for you. Oh, no. To be frank, you, as an audience member, just happen to be here. It is up to you whether or not to participate in this ritual. I encourage you to engage with hearts open and with your Western lens actively questioned.

Welcome to the cinema, fellow dreamers. It’s time to wake up.

**Ti Ames**

Director | CRUMBS FROM THE TABLE OF JOY

# TRANSFORMATIONS

The 2022/23 Live Arts Season

The Caplin Foundation presents

## CRUMBS FROM THE TABLE OF JOY

by Lynn Nottage

**LIVE ARTS**

March 3-19, 2023

Directed by  
**Ti Ames**

Sponsored by  
**Allison Partners**

Pay-What-You-Can tickets sponsored by **Ting**

Act I is about 70 minutes. Act II is about 70 minutes.  
***There will be one 15-minute intermission.***

### CONTENT WARNINGS

Use of African American  
Vernacular English

Mature language

Descriptions of death, violence,  
and racist encounters

References to World War II and  
Hitler

Historical xenophobia and allusions  
to anti-Semitism

Alcohol and cigarette smoking

Season Sponsors Elizabeth & Joe LeVaca

**cville**

**WTJU91.1FM**  
UNIVERSITY OF VIRGINIA

**ting**

**PJ Networks**  
Computer Services

**The Local**  
Charlottesville, Virginia



NATIONAL  
ENDOWMENT  
for the **ARTS**  
arts.gov

Live Arts is supported in part by the Virginia Commission for the Arts, which receives support from the Virginia General Assembly and the National Endowment for the Arts, a federal agency.

# SETTING

Brooklyn, 1950

# CAST

ERNESTINE CRUMP    Christiana Mitchell (March 3-15)  
                                      Nik Scott (March 16-19)

ERMINA CRUMP    Jean Edwards

GODFREY CRUMP    Simeon Brown

LILY ANN GREEN    Ty Daniels  
                                      Sharon Millner (Understudy)

GERTE CRUMP    Stephanie Finn

# PRODUCTION TEAM

Director    Ti Ames

Production Stage Manager    Scott Dunn

Stage Management Apprentice    Maddie Chin

Scenic Designer    Will Slusher

Scenic Design Apprentice    Will Kelly

Lighting Designer    Heather Hutton

Lighting Design Apprentice/Board Operator    Caroline Jareb

Costume Designer    Martha Adekunle

Costume Design Apprentices    Elliot Armour, Kiera Davis

Sound Designer    Ivan Orr

Props Designer    Maggie Rogers

Dialect Coach    Andrew Bryce

Intimacy Coordinator    Laura Rikard

Fight Choreographer    Larry Friedland

Dresser    Savannah Meriwether

Soundboard Operator    Etta Feigert

This production is presented by special arrangement with Dramatists Play Service, Inc.

CRUMBS FROM THE TABLE OF JOY World Premiere Production by The Second Stage Theatre, May 1995; Artistic Director Carole Rothman, Producing Director Suzanne Schwartz Davidson; with a grant from the Lila Wallace-Reader's Digest Fund.

# Luck

by Langston Hughes

*Sometimes a crumb falls  
From the tables of joy,  
Sometimes a bone  
Is flung.*

*To some people  
Love is given,  
To others  
Only heaven.*

"Luck" by Langston Hughes from *The Collected Poems of Langston Hughes*, edited by Arnold Rampersad and David Roessel. Copyright © 1947 by Langston Hughes. Reprinted with the permission of Alfred A. Knopf, Inc.





## PLAYWRIGHT & DIRECTOR



### LYNN NOTTAGE PLAYWRIGHT

Lynn Nottage is the first and only woman to have won the Pulitzer Prize for Drama twice. Widely produced in the United States and throughout the world, she recently premiered *MJ the Musical* and *Clyde's* on Broadway, and an opera adaptation of her play *Intimate Apparel* commissioned by The Met/Lincoln Center. Her numerous awards and honors include a MacArthur "Genius Grant" Fellowship, the Dramatists Guild Hull-Warriner Award, TIME 100 (2019), the inaugural Horton Foote Prize, the Helen Hayes Award, the National Black Theatre Fest's August Wilson Playwriting Award, a Guggenheim Grant, and a PEN/Laura Pels Award.



### TI AMES DIRECTOR

Ti (they/them) is a director, actor, and educator native to Charlottesville. As a Black, nonbinary, and queer person, Ti approaches theater with a focus on ritual, healing, and collective survival to uplift underrepresented voices. They are the education director at Live Arts and teach African American History at the Renaissance School. They are also an accomplished playwright, script adapter, acting/vocal coach, and dramaturg. At Live Arts, Ti directed the Teen Summer Musical *RENT* in 2019 and Shelby Edwards' *LOST HOME, WIN HOME*, which opened the 2020/21 Forging Ahead Season. Other directing credits include: *Seven Guitars* (UVA, associate director); *Black Mac: A Macbeth Adaptation* and *See About the Girls* (Charlottesville Players Guild); *The Brothers Size* and *Olympus* (Oberlin College).

# WHO'S WHO IN THE CAST



**Christiana Mitchell**  
*Ernestine Crump*



**Nikodemos Scott**  
*Ernestine Crump*



**Jean Edwards**  
*Ermina Crump*



**Simeon Brown**  
*Godfrey Crump*



**Ty Daniels**  
*Lily Ann Green*



**Stephanie Finn**  
*Gerte Crump*



**Sharon Millner**  
*U/S Lily Ann Green*

Headshots by Will Kerner

## SIMEON BROWN | GODFREY CRUMP

Simeon has years of theatrical experience, including roles with First Baptist Church (Radford, VA), Christiansburg High School, and Virginia Tech. However, this is his first production in five years and his first production with Live Arts! Simeon serves as public-interest lawyer and is licensed to practice law in the Commonwealth of Virginia.

## TY DANIELS | LILY ANN GREEN

Ty (she/her) is thrilled to be cast in her third Live Arts production following FLYIN' WEST (2008) and SWEAT (scheduled for 2020, but unfortunately canceled due to COVID). She is honored to be a part of this production with such a talented group of people.

## JEAN EDWARDS | ERMINA CRUMP

Jean (she/her) is a senior at Charlottesville High School and is happy to be performing at Live Arts. Jean has done other shows in the past at the Jefferson School's Charlottesville Players Guild, where she played Tanesha in *Tanesha* (2021). She has also attended several Live Arts summer camps.

## STEPHANIE FINN | GERTE CRUMP

Stephanie (she/her) is thrilled to be back onstage at Live Arts. Previous Live Arts credits include TIGERS BE STILL, LES LIAISONS DANGEREUSE, GYPSY, SWEENEY TODD, MOTHER COURAGE, A LITTLE NIGHT MUSIC, and PILLOWMAN. Also *As You Like It*, *Picasso at the Lapin Agile*, and *Cabaret* at Four County Players.

## SHARON MILLNER | U/S LILY ANN GREEN

Sharon (she/her) is excited to be in this play at Live Arts. She would like to thank Joli for holding down the fort and wishes Kai would call her more. She misses Chuffie. Love you Mom.

## CHRISTIANA MITCHELL | ERNESTINE CRUMP

Christiana (she/they) is a teacher at the local Waldorf School. They are really excited for their first show at Live Arts. You may have seen Christiana in a plethora of Monticello Drama performances including *In the Heights* (2016), *Leap of Faith* (2017), and *Once on This Island* (2018).

## NIKODEMOS SCOTT | ERNESTINE CRUMP

Nik (he/they) is a first year at PVCC studying entrepreneurship and agriculture who loves performing. You may have seen them as the narrator in INTO THE WOODS (2022) or one of ten actors in LOVE AND INFORMATION (2022) at Live Arts. He started his theater career at Charlottesville High School as Leading player in *Pippin* (2020) and then as Donkey in *Shrek* (2021).

# PRODUCTION TEAM BIOS

## MARTHA ADEKUNLE | **Costume Designer**

Martha (she/her) is honored to be back to Live Arts after costuming PIPELINE (2021). She graduated from PVCC with a theater degree where she worked as an assistant seamstress and set builder on *Midsummer Night's Dream* (2021) and a stagehand on *Experience the Extraordinary with Craig Karges* (2021). This spring, she plans to go to Paris on a tour with the VCU Fashion Design Department.

## ELLIOT ARMOUR | **Costume Design Apprentice**

Elliot (he/they) is an eighth grader at Journey Middle School. They are very excited to be able to work with Live Arts. He has attended Live Arts summer camp, but this is his first Live Arts show. Elliot has done many other productions at a variety of other theaters.

## ANDREW BRYCE | **Dialect Coach**

Andrew (he/him) has acted at Zeiders American Dream Theater, Hartford Stage, La MaMa, and others. He has directed for VAREP and HSC. Andrew is a Certified Miller Voice Method teacher and received his AEA and MFA from VCU. Thanks to Susan and Ti for this opportunity! [www.andrewbryceactor.com](http://www.andrewbryceactor.com)

## MADDIE CHIN | **Stage Management Apprentice**

Maddie (she/her) is a senior at Monticello High School and is thrilled to be part of CRUMBS! Last year, Maddie was the stage management apprentice for THE LEGEND OF GEORGIA MCBRIDE (2022) at Live Arts. She is excited to finish her senior year with this show and go to the University of Mary Washington this fall.

## KIERA DAVIS | **Costume Design Apprentice**

Kiera (she/her) is a freshman at Charlottesville High School and is happy to be working on the show. She has not worked with Live Arts before but has worked on other theater productions.

## SCOTT DUNN | **Production Stage Manager**

Scott (he/him) is thrilled to work with his old friend, Ti Ames, as their stage manager for the first time! Scott is stage managing his third Lynn Nottage play at Live Arts—he still counts SWEAT despite the pandemic shutting it down. He will next stage manage *King Headley II* in Fall 2023 as Charlottesville Players Guild closes out the August Wilson cycle.

## HEATHER HUTTON | **Lighting Designer**

Heather (she/her) has been a professional lighting designer for 25+ years. At Live Arts: MEN ON BOATS, SEVEN HOMELESS MAMMOTHS, SWEET CHARITY, THE SUGAR, GREY GARDENS, HE WHO GETS SLAPPED, EURYDICE, LYSISTRATA, 24/7 and GALA. Heather is also the master electrician for the Live Arts Fringe Tech Team.

## CAROLINE JAREB | **Lighting Design Apprentice**

Caroline (she/her) is a second year at UVA studying math and computer science. This is her first show with Live Arts. Most recently she assistant directed *Hello, Dolly!*, performed as Nigel in *Something Rotten!*, and stage managed *Curtains* with First Year Players at UVA.

## WILL KELLY | **Scenic Design Apprentice**

Will (he/him) is a student at Community Lab School. CRUMBS FROM THE TABLE OF JOY is his first Live Arts project. He loves to design things and is excited to be a part of this amazing play.

## IVAN ORR | **Sound Designer**

Ivan (he/him) is a Charlottesville based multi-instrumentalist/composer/producer. He is extremely excited to be a part of the production team for CRUMBS at Live Arts! You may have heard Ivan's musical composition work (and seen him on camera) in the award winning documentary *Raised/Razed* (2022).

# JOIN US FOR A POST-SHOW AUDIENCE TALKBACK

Take a peek behind the curtain with Director Ti Ames and the cast and production team of CRUMBS FROM THE TABLE OF JOY at Live Arts.

**Thursday, March 16 (after the show). All are welcome!**

*If you would like to join us after the show, please arrive at 9:30pm.*

# ting




## Connect better

Ting Internet. Fast, reliable fiber internet for Cville.



### Home Fiber 1000 Gigabit Internet

**\$89**/mo

-  Up to 1,000 Mbps symmetrical speeds
-  Connect 20+ devices seamlessly
-  Unlimited data

Live Arts Supporters: Order Home Fiber 1000 using promo code **LIVEARTS2022** and receive free standard installation, your second month of service FREE, a \$50 donation to Live Arts and a \$25 Downtown Mall gift card!

Learn more at [tinginternet.com/cville](https://tinginternet.com/cville)

## PRODUCTION TEAM BIOS (CONT.)

### MAGGIE ROGERS | **Props Designer**

Maggie (she/her) is a local designer and fabricator. Maggie's recent props design credits at Live Arts include flipping through magazines for VIOLET, braiding hair for INTO THE WOODS, and opening cans of tuna backstage for THE CHILDREN.

### LAURA RIKARD | **Intimacy Consultant**

Laura (she/her) is co-founder and head faculty of Theatre Intimacy Education. Laura choreographs, consults, and teaches workshops on best practices for staging intimacy for professional and educational theater and film across the country. She is a graduate of UVA's MFA acting program and a mom of four-year-old twins. Insta: @lrikardlc

### WILL SLUSHER | **Scenic Designer**

Will (he/him) is honored to be part of this team. Previous Live Arts set designs include PIPELINE, CURIOUS INCIDENT, HAND TO GOD, PETER AND THE STARCATCHER, HUNTER GATHERERS, GETTING NEAR TO BABY, ADDING MACHINE, and THE GIVER. Thanks to all the volunteers who helped turn this design into reality, and to Jacqui and Lincoln for their constant love and support.

# PJ Networks

## Computer Services

Network Support ~ Security and Compliance ~ Managed Services

***Whatever It Takes!***

(434) 975-0122

pj-networks.com

***1st Place Winner of the Readers'  
Choice Awards for the Past 8 Years***

# WHO MAKES THIS WORK

## SETS, LIGHTS, & COSTUMES

Michelle Abban  
Caroline Abdenour-  
Brown  
Ella Rose Amatucci  
Hill Barnett  
Will Barnett  
Adam Bechtel  
Tom Bloom

Meredith Dykstra  
Tammy Eberly  
Tricia Emlet  
Dan Feigert  
Etta Feigert  
Lita Flowers  
Brody Huff  
Caroline Jareb  
Will Kelly  
Lindsay Meck

Savannah Meriwether  
Logan Norris  
Will Slusher  
Risa Stiefel Tutia  
Emily Torman  
Tony Walker  
Kris Williams  
Cory Williams  
Mei Yu  
Linda Zuby

## FRONT OF HOUSE

Hope Bagley  
Erin Bulinski  
Max Bulinski  
Deborah Caudle  
Elaine Chapman  
Roberta Cook  
Alex Davis  
Brian Dowd  
Malcolm Dyson  
Nick Evans  
Joan Forrest  
Margaret Gardiner  
Eric Gilchrist  
Amy Goffman  
Dave Goldstein  
Ruth Mary Hall

Brian Hamshar  
Edwina Herring  
Sue Horne  
Jim Horstkotte  
Ginny Hoverman  
Michele Howe  
Demitri Kalogeropoulos  
Jane McDonald  
Mark McLane  
Margaret Migas  
Patrick Migas  
David Minton  
Kathi Minton  
Susan Munson  
Sandra Pai  
Sarah Peaslee  
John Rabasa  
Tom Raney

Julia Robertson  
Dawn Schimke  
Cheryl Schwandt  
Tracy Schwandt-  
Hardley  
Ethan Serr  
Laura Shea  
Stephen Smith  
Aimee Steussy  
Cherry Stewart  
Michael Swanberg  
Artie Tekel  
Susan Tiezzi  
Roger Tolle  
Jamie Virostko  
Tony Walker  
Zelda Walker  
Tim White

## CONCESSIONS PARTNERS

Albemarle Baking Company  
Champion Brewing Company

Early Mountain Vineyards  
Mudhouse Coffee Roasters



## STAFF

**Ti Ames**

*Education Director*

**Tia Daniels**

*Housekeeper*

**Jeremy Duncan Pape**

*Technical Director*

**Susan E. Evans**

*Artistic Director*

**Ronda Hewitt**

*Development Manager*

**Anne Hunter**

*Executive Director*

**Chris Kelly**

*Administration (Volunteer)*

**Kathleel Mueller**

*Production Manager  
& Volunteer Coordinator*

**Ray Nedzel**

*Fringe Director*

**Adrienne Oliver**

*New Works Director*

**Katie Rogers**

*Marketing Manager*

**Darryl Smith**

*Audience Experience Manager*

**Annie Temmink**

*Associate Technical Director*

**Linda Zuby**

*Bookkeeper*

## PLAYBILL

Design by Katie Rogers

Production Photos by Will Kerner

Nottage Photo by Victoria Stevens

Cover Art: Robertafelice,  
Wikimedia Commons; U.S. Farm  
Security Administration/Office of  
War Information.

## BOARD OF DIRECTORS

**Ernest Chambers**

*President*

**Johannah Castleman**

*Vice President*

**Barbara Kessler**

*Secretary*

**Derick Williams**

*Treasurer, Finance Chair*

**Fredrick Martin**

*DEI Chair*

**Matt Yohe**

*Governance Chair*

**Scott Williams**

*Development Chair*

**Shilpa Davé**

**Kelly Dowd**

**Aimee Fagan**

**Jaronda Miller-Bryant**

**Jacquelyn Nasca**

**Ckalib S. Nelson**

**Bonita Patton**

**Lizzy Ramey**

**Molly Shadel**

**Larissa Sneathern**

**Ashleé Thompson-Bellamy**

CCA Representatives:

**Karen Pape**

**Barbara Kessler**

Counsel:

**James F. Neale, McGuireWoods LLP**

*As Live Arts' pro-bono attorney, Jim gives generously of his time and expertise. We are incredible grateful for his wise counsel and commitment to forging theater and community in Charlottesville!*

# WE'RE HIRING

## 2023 Live Arts Summer Staff



We are looking for enthusiastic, energetic individuals to join our team of **camp counselors** and **administrative interns** who make Live Arts theater camps possible! All positions include a weekly stipend.

Find more information and interest forms at [livearts.org/work-here](https://livearts.org/work-here)





▶ Celebrate the best of Virginia wine & food

Award-winning wines & tasting room.  
Seasonal menus from the bounty of local Virginia farms.

Details at [earlymountain.com](http://earlymountain.com).

Come visit us in the foothills of the Blue Ridge Mountains.



EARLY  
MOUNTAIN

6109 Wolfstown Hood Rd. Madison, VA 22727

# FRIENDS, DONORS, & SUPPORTERS

We are so grateful for the following individuals and organizations who have generously supported the 2022/23 Transformations Season. This donor list recognizes philanthropic gifts received between **July 1 and January 31, 2022.**

If there is an error or you would like your name to appear in a different format, please contact Development Manager Ronda Hewitt at [ronda@livearts.org](mailto:ronda@livearts.org).

## GIFTS FROM INDIVIDUALS

Cyndy Alaimo	Hillary J Bracken	Susan J. Dempsey & Robert C. Cargill
Josh & Cherish Alberts	Olivia E. Branch	Brandi Dennis
Elizabeth Alcorn	Cathie Brettschneider	Eunie Kelly & James Deter
Courtney Ashmore	Alyssa Brookland & Steven Caliarì	Terri Di Cintio & Chip King
Cathryn Astin & Patricia Rose	Dickson & Dee Brown	Dudley Doane
Patricia Asuncion	Jessie Bruner	Mariko Doktor
Rachel Baker & James Burnett	Brenda & Rich Busofsky	Honor Dorsey
Lori Balaban	Mary & Randy Caldejon	Andrew & Marybeth Dowdell
Louisa Barrett	Chris Cannady	Will Dozier
Robert Baumgartner	Gwendolyn Cassady	Lisa Draine & Joel Schectman
Judy & Ferdi Bazin	Samuel & Cyndy Caughron	Kevin Driscoll
Charles Beard	Ernest & Christine Chambers	Lewis Dunn
Kim & John Beard	Janis & Robert Chevalier	Bette Dzamba & David Sellers
Ari Bell	Marisa & Neil Christensen	William Ellis
Heidi Gilman Bennett	Sean Clinchy & Estelle Rainsford	Ellen Evans
Sari Bennett & Samuel Schustek	Judy & Ralph Cohen	Aimee & Daniel Fagan
Tucker Berardi	Mary Collier	Melissa Figueroa & Eric Neff
Earle & Nicole Betts	Abby Cook	Christine Fleckles & Edwin Rushia
Paul Beyer	Robert Cook	Robert & Joan Forrest
Kristina Reid Black	Kathy & Richard Cornelius	Diana Foster-Jones
Ralph & Rose Bledsoe	Adam Courville	Rob & Kathy Freer
Molly Bloom & Joel Streeter	Virginia Daugherty	Pam Friedman & Ron Bailey
Thomas & Betsy Bloom	Shilpa Davé	Martha S. Fruehauf
Larry Bouchard & Margaret Galloway	Eduard & Francesca De Lange	Elizabeth Fuller
Elizabeth Bowman & Randy Pendleton	Donna & Richard DeLoria	Nancy & Jim Galloway
		Cheryl Gaughen

Barbara Gehrung	Jonathan Howard	Elizabeth & Joe LeVaca
Chip Gerstenmaier	Anne Hunter & Scott Taylor	Bill & Peyton Lewis
John Gibson & John Bluhm	Cynthia Hurst	Linjie Li
David & Janna Gies	Daniel Ingersoll	Jackie Lichtman & Russell Linden
Molly Giesbrecht	Deborah Jackson	John Lockney
Grace Giras	Susan Jacobson & Norman Oliver	Mary Carter Lominack & Kristine Hall
Kristen Gleason	Natacha Jacques	Barbara MacCallum & Robert Johnson
David & Deborah Godden	Judd Jarvis	Zanne Macdonald
Amy Goffman & Jim Horstkotte	Mary-Agnes Johnson	Mary Maher & Gabe Ofiesh
Larry Goldstein	John & Joan Kammire	Bruce Mahone
Linda Gonder-Frederick & Jeff Frederick	Catherine F. Kane	Joan Manes
Stephanie Goodwin	Heather Karp & Ira Herbst	April Manning
Nanci & Jeff Gould	Barbara & Jay Kessler	Carol Manning & Eric Turkheimer
William Gray	Janis Ketchmark	Fredrick Martin
Thomas & Barbara Grzymala	Michael King	Abigail Maynard
Danait Haddish	Donald & Mary Kirwan	Beverley McCaskill
Erin Fletcher Hall	Tom & Ruth Klippstein	Jane McDonald
Sharon & James Harrigan	Karen & Scott Knierim	Michael McKee
Kyndal Harrison	William S. Knight	John McLaren
Will & Mittie Harvey	Phyllis Koch-Sheras	Glenn McLaughlin
Susan Haubensstock	Ron Krauss	Karyl-Leigh Megaw
Roger Hautsch	David W. & McCrea S. Kudravetz	Jon & Mary Mikalson
Maribeth Haynes	Beth & Nicholas Kuhn	David & Kathi Minton
Elain Heffelfinger & Doug Murphy	Mindy Labernz	Kate & Joe Monaghan
Jim Heilman	Jacqueline Langholtz & William Randolph Taylor	Jami Montambault & Hoke Perkins
Ronda Hewitt	Harold & Marcia Langsam	Julie & Geoff Montross
Heather Hill	Daphne Latham	Kerry Moran & Mark Rylander
Kinne Hoffman & Christopher Milner	Cathy Lawder	Mindy Moran
Brian Hogg	Elizabeth Lee & Thomas Fitzgerald	Randolph Moulton
Nancy Hopkins & Bruce McKenney	Joan Lee	Margaret Mucklo
Sharon Lee Hostler	Meredith Lee	Noelle Muha
Elizabeth Howard	Bill LeSueur	



## **Navigating a dispute?**

The Mediation Center of Charlottesville has been serving Central Virginia for over 30 years. Our certified mediators facilitate divorce agreements, landlord-tenant issues, workplace conflicts, custody/visitation disputes, neighborhood disagreements, eldercare decisions, and more.

**Contact us. We can help.**



**[www.mediationville.org](http://www.mediationville.org) ♦ 434-977-2926**

# MUDHOUSE COFFEE ROASTERS



BEAUTIFUL COFFEES  
THOUGHTFULLY SOURCED  
AND CAREFULLY ROASTED  
FOR YOU

MUDHOUSE.COM  
FACEBOOK.COM/MUDHOUSE  
@MUDHOUSECOFFEE

THE  
**Oratorio**  
SOCIETY OF VIRGINIA  
MICHAEL SLON MUSIC DIRECTOR

*An  
American  
Tapestry*

March 11, 2023  
[www.oratoriosociety.org](http://www.oratoriosociety.org)

*Angelo*

ANGELOJEWELRY.COM  
434-971-9256

# FRIENDS, DONORS, & SUPPORTERS (CONTINUED)

Matthew B. & Mary P.Y. Murray	Pam Roland Lengel	Anne Tilney Brune
Jacquelyn Nasca	Marion W. & Walter B. Ross	Emily Torman
Willa & Jim Neale	Jane Saltzman	Andrew & Alison Towns
Ckalib S. Nelson	Geri & Bruce Schirmer	Cindy Ann Trentacosta
Louis & Kristine Nelson	Stephanie Schlecht	Betsy & Chip Tucker
Cathy & Jeep Newman	Karen Schmidt	Bill & Elly Tucker
Alex & Jessica Newmark	Eve & Mark Schwartz	Patricia Vastano
Lia Norton	Aileen & Gary Selmeczi	Ken Victor
Dennis O'Connor	John-Michael Seng-Wheeler	Sean Walsh
Mark & Carolyn O'Hara	Molly & Matthew Shadel	Bitsy & David Waters
Debbie Owen	Kurt Meusel & Kelli Shermeyer	Annie Way & Warren Craghead
Marla Palermo	Amanda Shuker	Lewis Weber
Karen Pape	Laurie Shulman	Ann Welch
Peggy & Bob Paviour	Naomi Slagowski	Marian & Jerry Wendelin
Chris Peterson & Jeff Horneff	Kay Slaughter	Christopher & Sara Whiffen
Karl Pfefferkorn & Katharine Birdsall	Craig L. Slingluff, Jr.	Bonita White
Elizabeth Powell	Larissa Sneathern	Lynda White
Lisa Provence	Kevin Snyder	Barbara Williams
Michelle Prysby & John Woodell	Gail South	Scott Williams & Susan Braun
Lizzy Ramey	Daniel Sprague	Tammy Wilt
Gail Raymaker & Gerald Shea	Maria Stein	Charles M. Winkler
Martha & Craig Redinger	John Stoner	Carol Wise & Nancy Weiss
Gabriella Reedy	Erika Struble	Russell Witt
Joshua Reifel	Miller & Lee Susen	Keith & Adrienne Woodard
Alice Riccabona	Christine Sweeters	George Worthington & Cameron Mowat
Kristin Rigg	Patsy & Richard Swindler	Ashley Wright
Vivian Robinson	Charles W. Swinney & Steuart White	Debbie Wyatt
Katie Rogers	Suzanne Tanner Chitwood	Matthew C. Yohe & Erica A. Barnes
Kyle Rogers & Mariana Vervena	Ellen Teplitzky	David & Linda Zuby
	Steve & Nell Tharp	
	Heidi & Terry Thorsen	



## GIFTS FROM ORGANIZATIONS

Albemarle County

Allison Partners

Bama Works Fund of Dave Mathews Band

Bank of America Charitable Foundation

Bushman Dreyfus Architects

C&O Restaurant

The Caplin Foundation

Catalysis Fund

Charlottesville Area Community Foundation

Chaski Global

City of Charlottesville

C-VILLE Weekly

The Joseph and Robert Cornell Memorial Foundation

Daedalus Used Books

The DN Batten Foundation

Dominion Energy Charitable Foundation

Heiner Family Fund

Latitude 38

The Local

The Madwoman Project

The Oratorio Society of Virginia

Panorama Consulting

PJ Networks

Quantitative Investment Management Fund

Silverchair

Strauss Construction

T & N Printing

Target Circle

Ting

The Vault

Virginia Commission for the Arts

Virginia National Bank

Woodard Properties

WTJU 91.1FM



# FRIENDS, DONORS, & SUPPORTERS (CONTINUED)

## GIFTS IN HONOR OF

### ***Helen C. Chambers***

Ernest & Christina Chambers

### ***Jean Edwards***

James Childress

### ***Our parents Jo, Ed, Russ, Muff***

Pat & Madison Cummings

### ***Etta Feigert***

Frank & Fran Feigert

### ***Hillel Finder***

Gabriel Finder & Fern Hauck

### ***The Founders***

Bobbie Buxton

### ***Jim Heilman***

Patricia Smith & Ray Mishler

### ***Anne Hunter***

Dawne Brown White

### ***Anne Hunter and the dedicated Live Arts staff***

Scott Williams & Susan Braun

### ***Men on Boats Cast***

Anne Olsson Loebis

### ***Nabb Sisters***

Andrew & Marybeth Dowdell

### ***Colette & Michael Russo***

Lorraine Rein

### ***Darryl Nelson Smith***

Anonymous

Jocelyn Johnson  
& Billy Hunt

Sydna & Bill Julian

Marta Keane

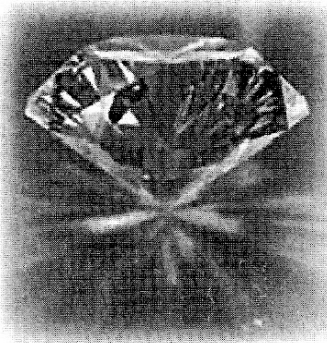
Peppy Linden

### ***Fran Smith***

Lotta Lofgren

Timothy Read

The more things change...  
the more they stay the same



Offering the finest in  
Diamond and Wedding Rings - College and Class Rings  
Wedding Gifts - Engraving - Pearl Restrings  
Pewter items - Accutron, Bulova & Carvelle Watches  
Expert Watch and jewelry Repair  
And much more.

## Tuel Jewelers

On The Downtown Mall, 319 East Main St., Charlottesville  
"Your Friendly Jewelry Store since 1945" 434-295-4258

## GIFTS ON BEHALF OF

### **Barbara & Jay Kessler**

David & Sue McConaughy

### **Katie Rogers**

Grason Wolfe

## GIFTS IN MEMORY OF

### **John Conover**

Hank & Jaye Barre

Will Kerner

### **Jon Eddows**

Donna  
& Sandy McAdams

### **Floyd Hurt**

Donna  
& Sandy McAdams

### **James C. Miller**

Christine Sweeters

### **Evelyn Nasca**

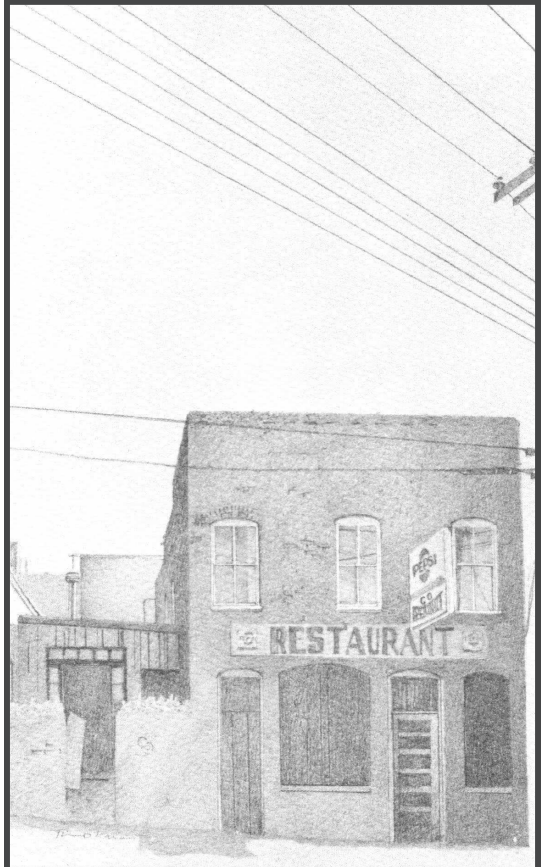
Jacquelyn Nasca

### **Howard Pape**

Jeremiah  
& Morgan Brophy

**Looking to honor a  
loved one with a  
contribution to Live Arts?**

Contact Ronda Hewitt  
at [ronda@livearts.org](mailto:ronda@livearts.org) or  
434-977-4177 x101.



*à votre santé*

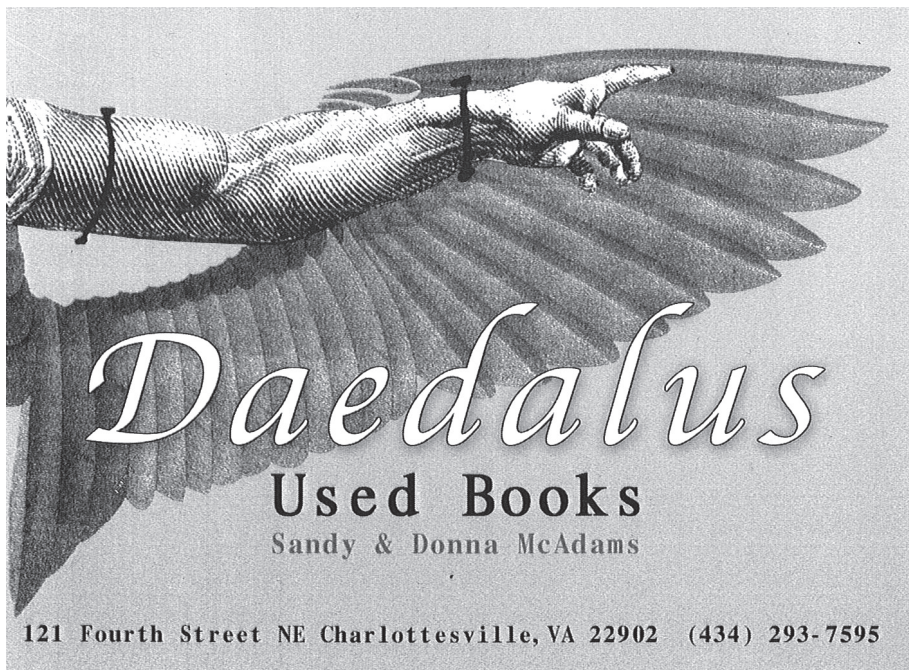
LA CUISINE

• SINCE 1976 •

**C and O**  
**RESTAURANT**

434.971.7044

515 E. Water Street Charlottesville, VA

A black and white illustration of a hand pointing towards the right, with large, feathered wings extending from the arm. The hand is wearing a long-sleeved garment with a cuff. The background is a light, textured grey.

*Daedalus*  
Used Books  
Sandy & Donna McAdams

121 Fourth Street NE Charlottesville, VA 22902 (434) 293-7595

# The Jeweler's Eye



Estate Jewelry  
Central Place  
*on the*  
Downtown Mall

[www.jewelerseye.com](http://www.jewelerseye.com)

**Panorama Consulting proudly supports Live Arts**

*Forging Theater and Community!*



**Providing innovative solutions and  
guidance for nonprofit organizations  
in Charlottesville and the greater  
Central Virginia region.**

**PRINCIPAL CONSULTANTS**

Scott A. Williams, Founder & Managing Partner

Susan Braun, Managing Partner

Larry Goldstein, Senior Consultant

**[panoramaconsultingservice.com](http://panoramaconsultingservice.com)**

# JOIN US IN THE SCENE SHOP!



Help us build a show from the ground up. Volunteering in the scene shop is a fun and meaningful way to work with your hands, problem-solve as a team, develop carpentry and painting skills, make friends, use power tools, and so much more.

## Upcoming set builds for BUYER & CELLAR:

Tues, March 7 (6-10pm)  
Sat, March 11 (10am-4pm)  
Tues, March 14 (6-10pm)  
Sat, March 18 (10am-4pm)

Tues, March 21 (6-10pm)  
Sat, March 25 (10am-4pm)  
Tues, March 28 (6-10pm)  
Sat, April 1 (10am-4pm)

All are welcome! Remember to wear closed-toe shoes and work clothes. A meal will be provided. You can join us for partial or full set builds. **Questions? Email [volunteer@livearts.org](mailto:volunteer@livearts.org).**



Find current volunteer opportunities and ways to get involved at  
**[livearts.org/volunteer](https://livearts.org/volunteer)**



# Streisand CELLAR-BRATION

We're welcoming the hilarious **BUYER & CELLAR** to Charlottesville's Live Arts with two of Barbra Streisand's greatest hits: See the Oscar-winning **FUNNY GIRL** at 12:15 pm Saturday, March 11th and the Oscar-winning **YENTL** at 7:00 pm Wednesday, March 29th. And catch **BUYER & CELLAR** April 7th-29th at Live Arts, located downtown at 123 E. Water Street.

FOR MORE DETAILS, VISIT [DRAFTHOUSE.COM/CHARLOTTESVILLE](https://www.drafthouse.com/charlottesville)





UP NEXT AT LIVE ARTS

# BUYER & CELLAR

by Jonathan Tolins

Directed by **Jude Hansen**

Starring **Jack Clifford**

Presented by **Strauss Construction**

**APRIL 7-29**



LIVE ARTS  
**WATER**

**WORKS**

NEW WORKS  
ON WATER ST.  
2023

**APRIL 10**  
Lineup Announced

**MAY 5**  
Kick-Off Party

**MAY 12-JUNE 3**  
Shows, Readings, and More

**APRIL 14**  
Tickets On Sale

**MAY 12**  
Opening Night

**JUNE 3**  
Closing Dance Party!